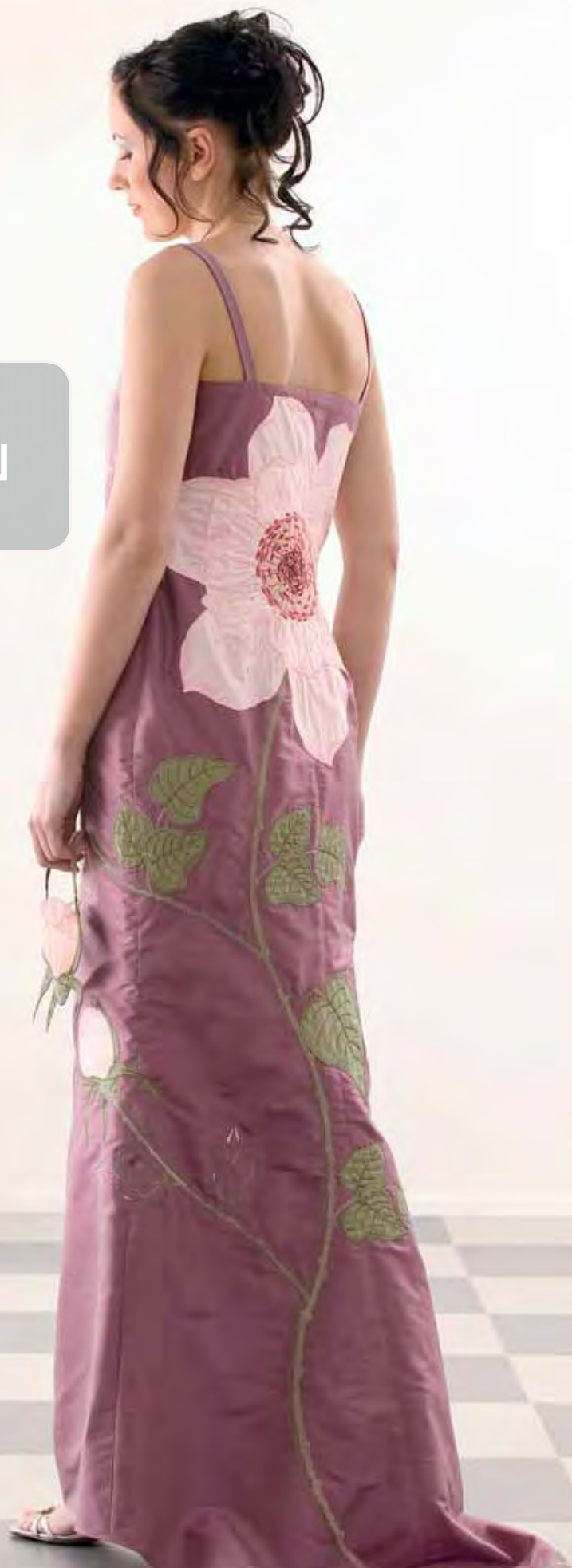
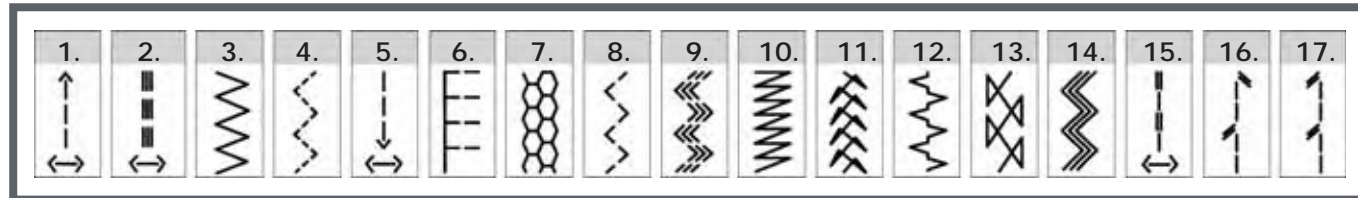


INTRODUCTION



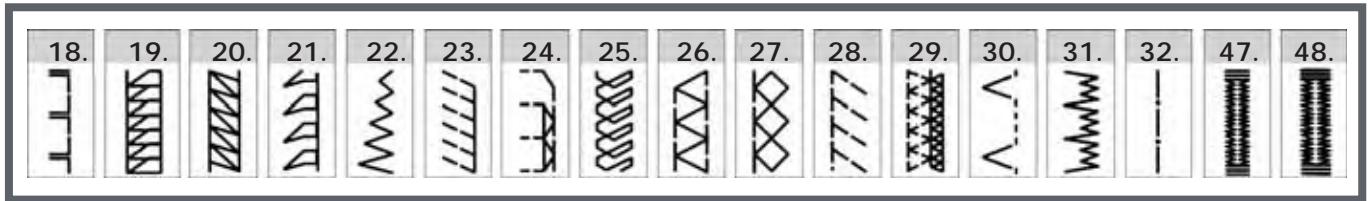
Stitch Chart

Utility stitches



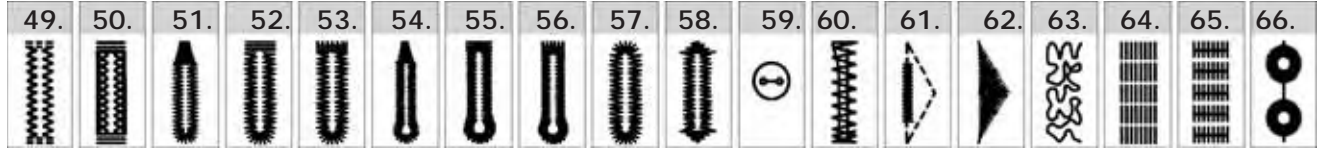
| Stitch No. | Description | Application |
|------------|--------------------------------|---|
| 1 | Straight stitch | For seaming and topstitching. Many needle positions for edge stitching and sewing in zippers. |
| 2 | Stretch triple straight stitch | For reinforced seams such as stitch trouser, under arm seams or decorative topstitching. With many needle positions. |
| 3 | Zigzag stitch | For finishing seams on fabrics appliqué work and inserting lace. |
| 4 | Three-step Zigzag stitch | Strong stitch for seam finishes, sewing elastic, darning tears, and patches. |
| 5 | Straight stitch reverse | Program permanent reverse for decorative sequences. Also for bulky projects. |
| 6 | Elastic overcast stitch | Use to seam and overcast on woven and stretch fabrics. |
| 7 | Honeycomb stitch | Elastic, decorative stitch for ornamental hem finishing on stretch fabric, for decorative elastic application and sewing with elastic thread in the bobbin. |
| 8 | Elastic stitch | Strong stitch for seam finishes, sewing elastic, darning tears and patches. |
| 9 | Triple stretch stitch | For sewing elastic on sportswear and bathing suits. |
| 10 | Z-Zigzag stitch | For finishing seams on fabrics, appliqué, and inserting lace. |
| 11 | Bridging stitch | For bridging, decorative hemstitching and crazy quilting. |
| 12 | Foundation Elastic stitch | For joining overlapped seams on bulky fabrics such as leathers and terry cloth. |
| 13 | Cross hem stitch | Provides a highly elastic, decorative seam for hems on sportswear and Casual wear. |
| 14 | Stretch triple zigzag stitch | Elastic stitch for decorative hems and topstitching. |
| 15 | Quilt stitch | For topstitching quilt projects with a hand look stitch. |
| 16 | Quilt stitch | For topstitching quilt projects with a hand look stitch. |
| 17 | Quilt stitch | For topstitching quilt projects with a hand look stitch. |

Utility stitches



| Stitch No. | Description | Application |
|------------|--|---|
| 18. | Quilting, appliqué or pinstitching | For hand look quilt appliqué or pinstitching. |
| 19. | Closed overlock stitch | For joining and overcasting stretch fabrics in one operation. The closed seam prevents fabric edges from fraying. |
| 20. | Closed overlock stitch | For joining and overcasting stretch fabrics in one operation. The closed seam prevents fabric edges from fraying. |
| 21. | Open overlock stitch | For joining and overcasting stretch fabric in one operation. |
| 22. | Zigzag stitch, right or left needle position | For appliqué couching over cords and creating eyelets. |
| 23. | Standard overlock stitch | For joining and overcasting stretch fabrics in one operation |
| 24. | Finished Edge overlock stitch | For joining and overcasting stretch fabrics in one operation. |
| 25. | Light-knit fabric patching stitch | Use to mend light jersey knits. Also for a decorative hem and neckline finish. |
| 26. | Closed overlock stitch | For joining and overcasting stretch fabrics in one operation. The closed seam prevents fabric edges from fraying. |
| 27. | Stretch knit overlock stitch | Join and overcast open knit fabrics and jersey. |
| 28. | Overlock stitch | For joining and overcasting stretch fabrics in one operation. |
| 29. | Reinforced Overlock stitch | For joining and overcasting fraying fabrics. The knitted edge reinforces and prevents fraying on raw edge. |
| 30. | Blindhem stitch | For securing hems invisibly on woven fabrics. |
| 31. | Elastic blindhem | For securing hems invisibly and finishing the edge on stretch fabrics. |
| 32. | Basting stitch | For basting projects pieces together. |
| 47. | Linen buttonhole | Buttonholes for blouses, shirts and linen. |
| 48. | Standard buttonhole | Basic buttonhole for blouses, shirts and jackets. Also for pillow cases. |

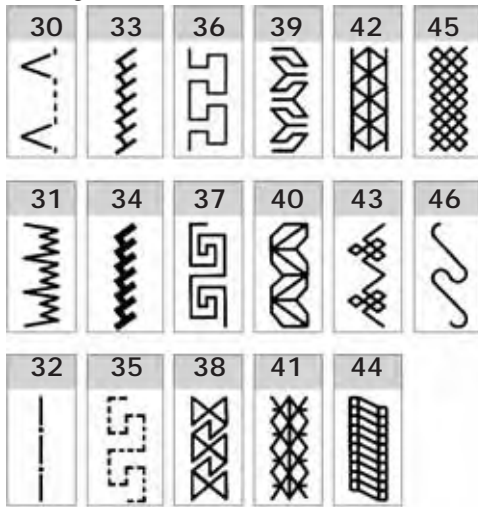
Utility stitches



| Stitch No. | Description | Application |
|------------|--|--|
| 49 | Stretch buttonhole | Buttonhole for stretch fabrics. |
| 50 | Cross stitch buttonhole | Decorative buttonhole for jackets and for embellishing other garments. |
| 51 | Rounded buttonhole with pointed bartack | Buttonholes for shirts, jackets and trousers. |
| 52 | Rounded buttonhole with lengthwise tack | Buttonholes for shirts, jackets and trousers. |
| 53 | Rounded end buttonhole with crosswise tack | Buttonholes for shirts, jackets and trousers. |
| 54 | Eyelet buttonhole with pointed bartack | Professional tailor's buttonhole, for denim jackets and trousers. Or as a decorative effect for kitchen and shower curtains. Add rings through the buttonholes to hang the curtains. |
| 55 | Eyelet buttonhole with lengthwise bartack | Professional tailor's buttonhole, for denim jackets and trousers. Or as a decorative effect for kitchen and shower curtains. Add rings through the buttonholes to hang the curtains. |
| 56 | Professional eyelet buttonhole | Professional tailor's buttonhole, for denim jackets and trousers. Or as a decorative effect for kitchen and shower curtains. Add rings through the buttonholes to hang the curtains. |
| 57 | Rounded buttonhole | Use for lightweight garments or jackets. |
| 58 | Decorative Buttonhole with triangle tack | Decorative buttonhole for jackets and for embellishing other garments. |
| 59 | Button sewing program | For applying two-hole or four-hole buttons. |
| 60 | Bartack | For applying belt loops and reinforcing pockets. |
| 61 | Denim Bartack | Decorative bartack for trouser and skirt pockets |
| 62 | Decorative bartack | Decorative bartack for trousers and skirts. |
| 63 | Stippling stitch | Random darning stitch for mending rips and tears. Also great as a decorative accent. |
| 64 | Programmable Darning stitch | Programmable length for darning and repeat it for large repairs. |
| 65 | Programmable reinforced Darning stitch | Programmable length for darning and repeat it for large repairs. Reinforced by horizontal stitches. |
| 66 | Eyelet | Create eyelets for garments and home textiles. Also great for decorating nostalgia projects. |

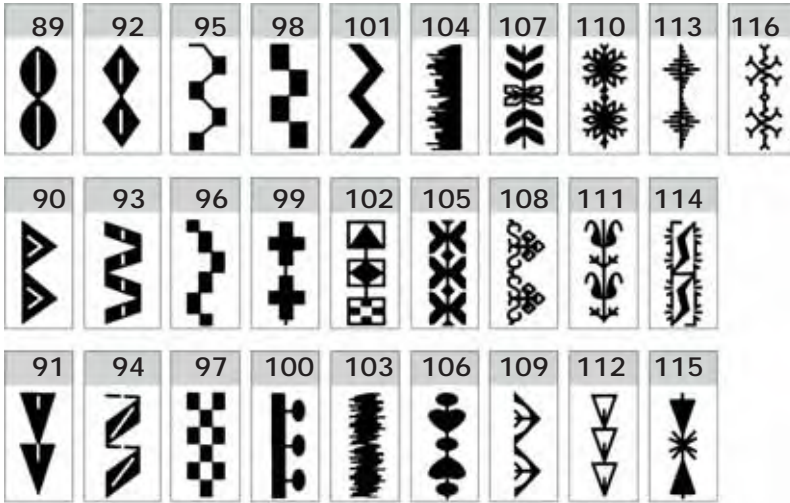
Decorative stitches creative 2170

Utility stitches

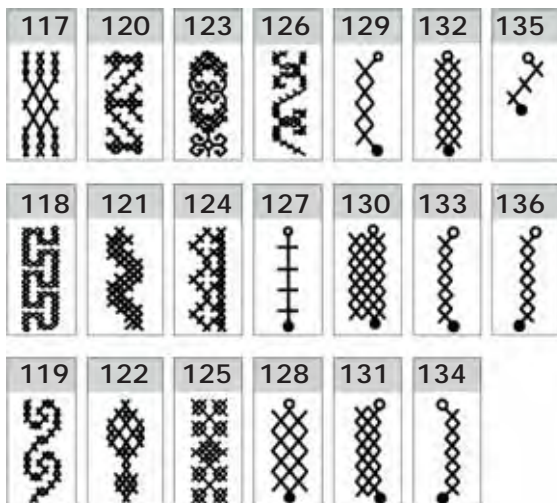


For the stitches 30, 31 and 32, you find a more detailed explanation in the Stitch overview on page 1:9.

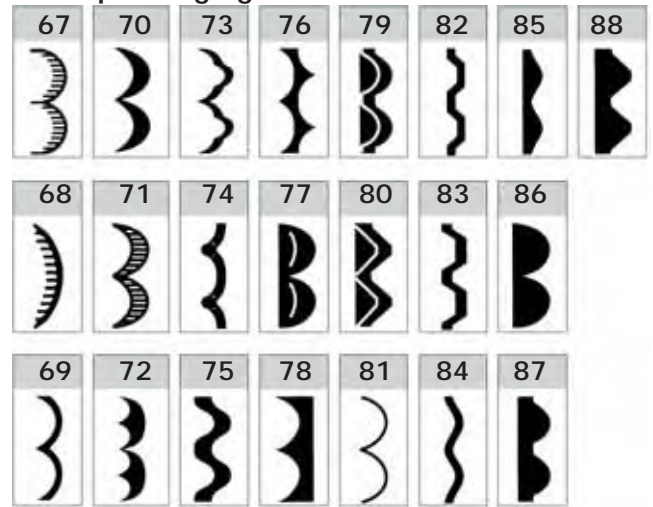
Satin stitches



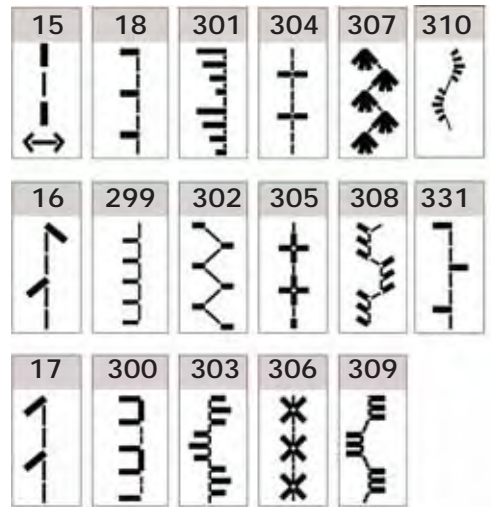
Cross stitches



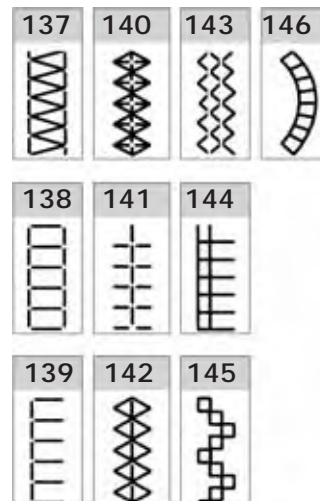
Scalloped edgings



Quilt stitches

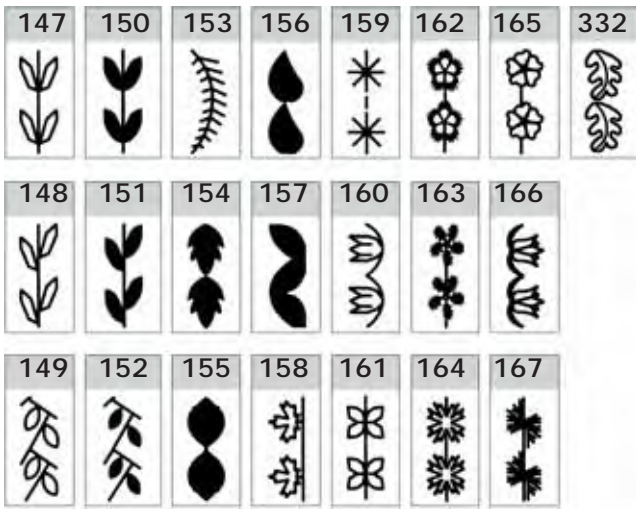


Hem stitches

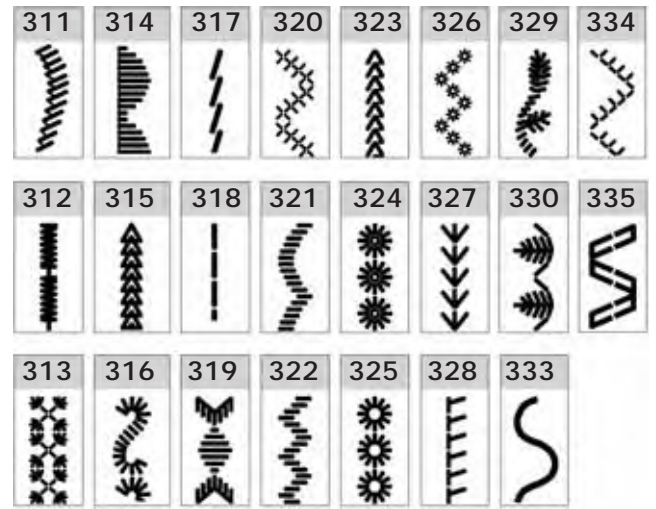


Decorative stitches creative 2170

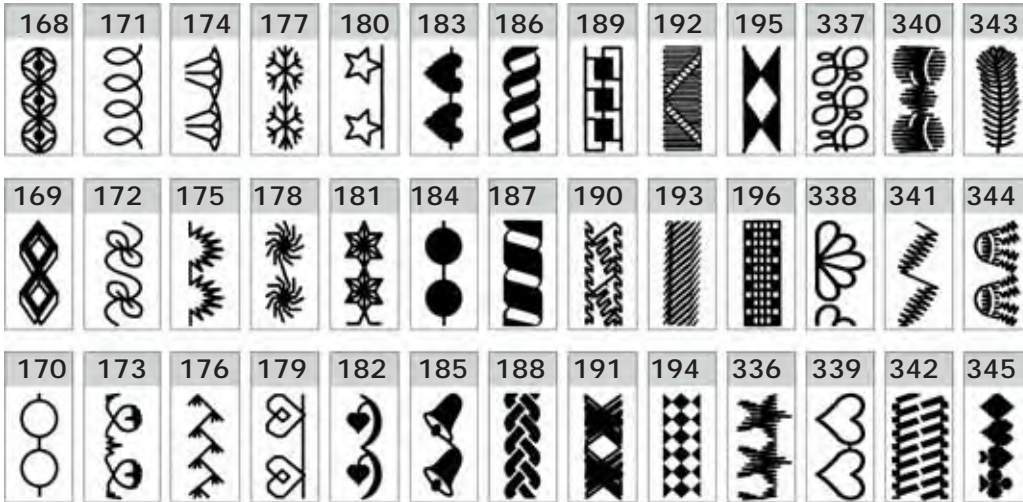
Leaves and Flowers



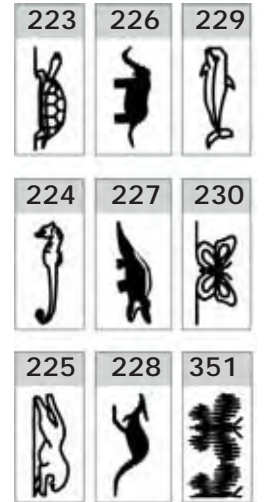
Antique Embroidery stitches



Decorative stitches 1



Animal stitches

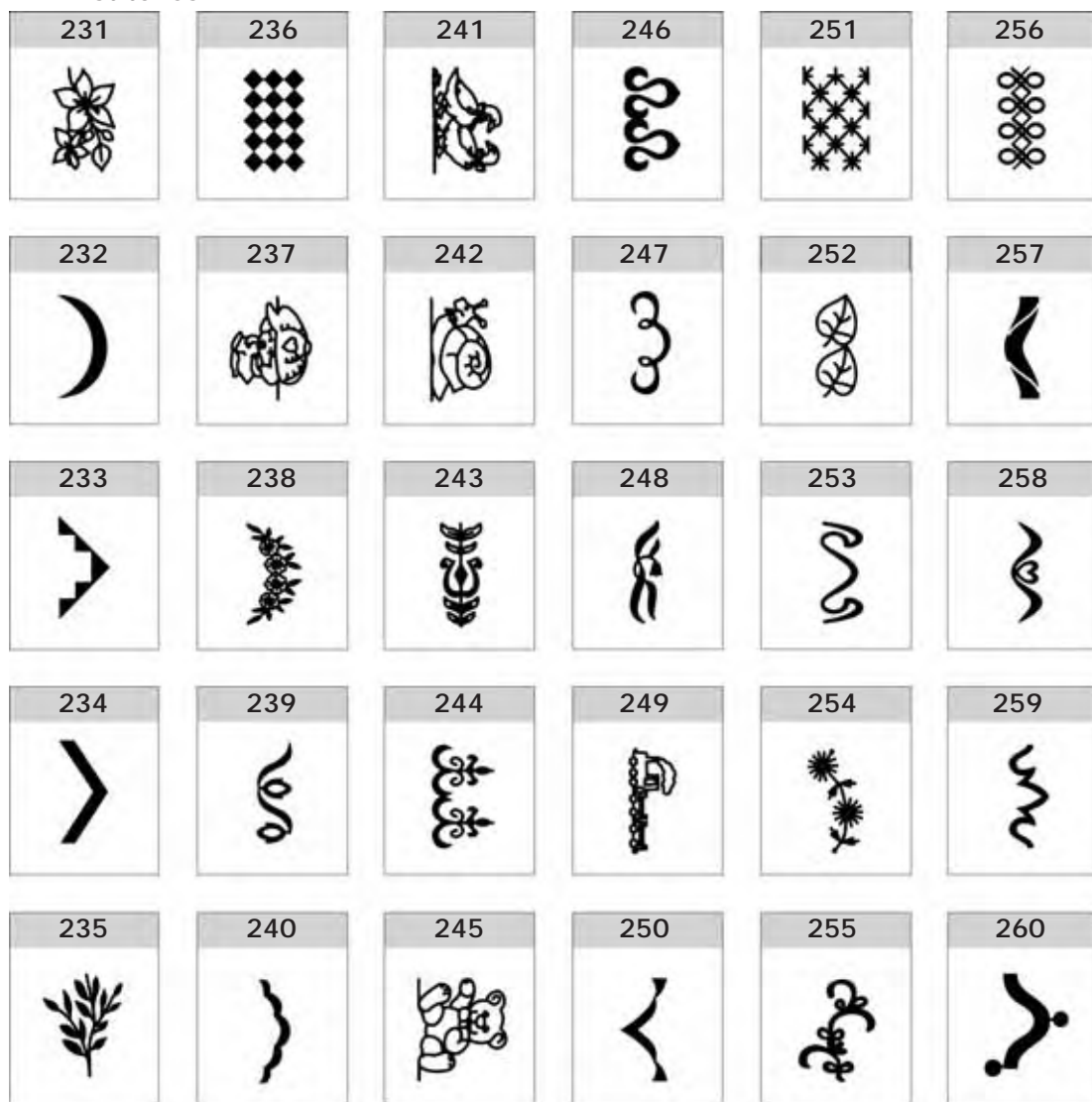


Decorative stitches 2

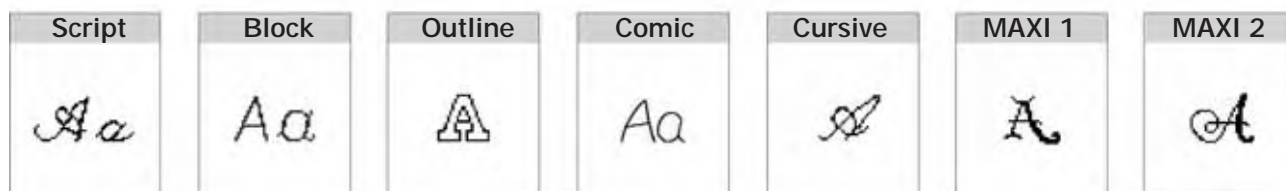


Decorative stitches creative 2170

MAXI stitches



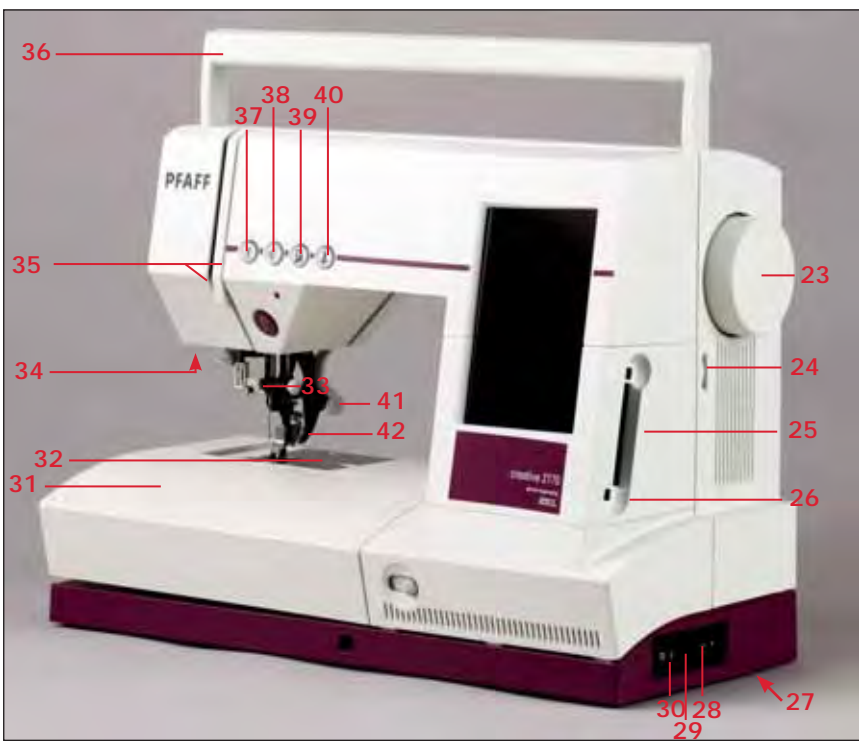
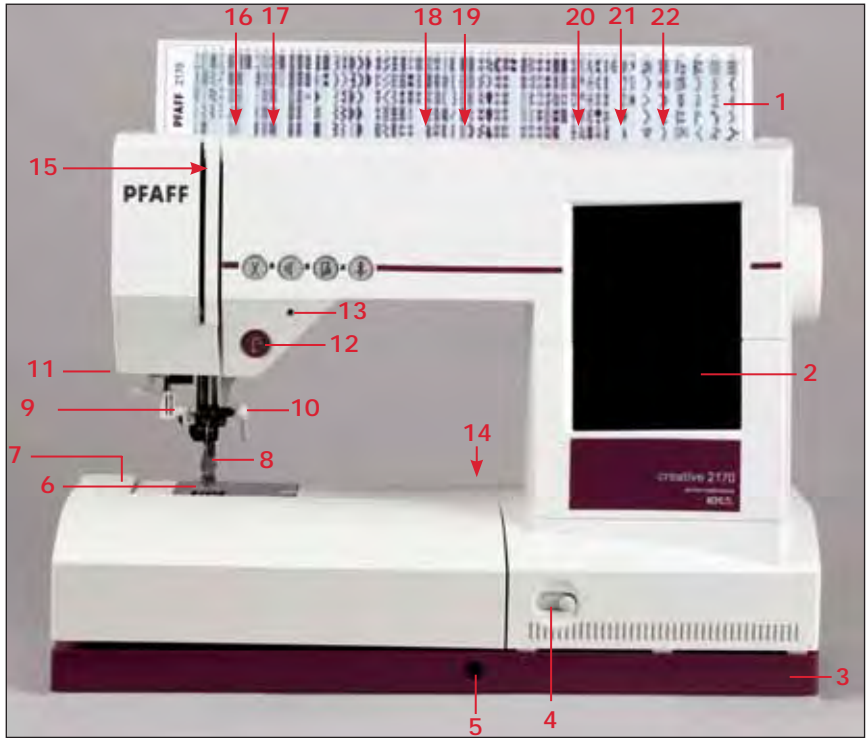
Alphabets

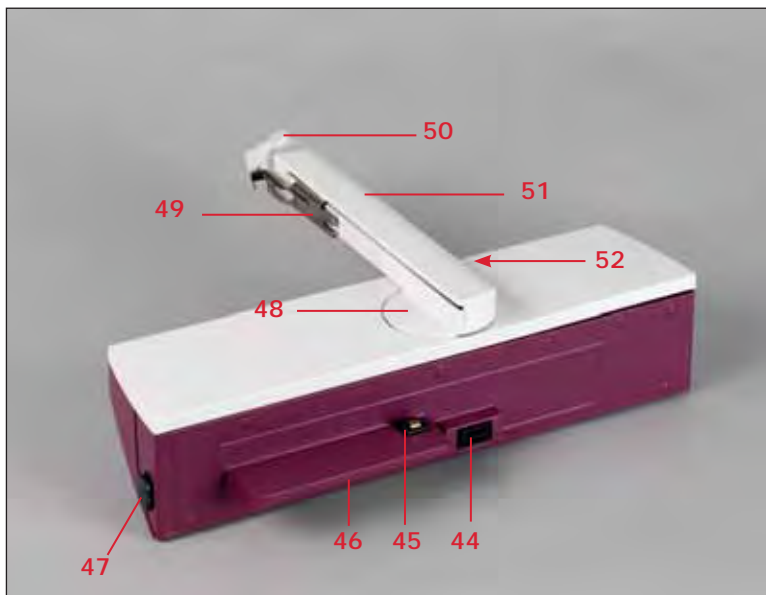


Machine overview

Parts of the creative 2170

- 1 Top cover with stitch chart
- 2 Multi-color touch screen
- 3 Base plate
- 4 Slide for lowering the feed dogs
- 5 Connection for knee lift
- 6 Feed dogs
- 7 Free arm
- 8 Presser foot holder with presser foot
- 9 Needle threader
- 10 Needle holder with set screw
- 11 Thread cutter
- 12 Reverse sewing button
- 13 Signal lamp bobbin thread monitor
- 14 Connection socket for embroidery unit
- 15 Take-up lever
- 16 Pre-tension device for threading and bobbin winding
- 17 Thread guide for threading and bobbin winding
- 18 Spool holder with spool cap
- 19 Second spool holder
- 20 Hole for third spool holder
- 21 Bobbin winding control
- 22 Bobbin winder
- 23 Handwheel
- 24 Contrast control for the display
- 25 Front and rear card slots
- 26 Release buttons for the card slots
- 27 Voltage switchover
- 28 Connection socket lead cord
- 29 Connection socket foot control
- 30 Main switch
- 31 Accessory tray
- 32 Needle plate
- 33 Thread guides, right and left
- 34 Sewing bulb (max. 5 W)
- 35 Threading slot
- 36 Carrying handle
- 37 Thread snips button
- 38 Pattern Start button
- 39 Sew slow button
- 40 Needle up/down button
- 41 Presser foot lifter
- 42 Integrated Dual feed /IDT





Parts of the embroidery unit

- 44 Connection plug to the machine
- 45 Fastener for fitting to the machine
- 46 Under arm guide
- 47 Release button for removing the embroidery unit
- 48 Pivot for embroidery arm
- 49 Metal guide for fitting the embroidery hoop
- 50 Release lever for removing the embroidery hoop
- 51 Embroidery arm
- 52 Recessed grip for raising and rotating the embroidery arm



Parts of the embroidery hoop

- 53 Snap-in pin
- 54 Two guide pins for retaining the hoop
- 55 Ribs for fitting the clips
- 56 Projections for placing the template
- 57 Retaining screw for the fabric

Standard accessories



**Standard presser foot
No. 0 A**
Order No.: 820 244-096



Zipper foot No. 4
Order No.: 820 248-096



**Fancy stitch foot with
IDT No. 1 A (for IDT)**
Order No.: 820 254-096



**Buttonhole foot No.
5 A**
Order No.: 820 299-096



**Fancy stitch foot No. 2 A
(not suitable for IDT)**
Order No.: 820 260-096



**Buttonhole guide No.
10**
Order No.: 820 294-096



**Maxi-stitch Embroidery
foot No. 8 (not suitable
for IDT)**
Order No.: 820 259-096



Darning foot No. 6
Order No.: 820 243-096



**Blindhem foot with IDT
No. 3**
Order No.: 820 256-096



Rolled hem foot No. 7
Order No.: 820 249-096



Creative Fantasy Embroidery foot

Order No.: 820 280-096



Edge guide No. 3

Order No.: 820 251-096



1. Brush

Order No.: 93-847-979-91

2. Extra spool pin

3. Seam ripper

Order No.: 99-053-016-91

4. Bulb remover / Needle plate changer

Order No.: 820 292-096

5. Bobbins

6. Felt pad

7. Spool caps

8. Needles



Stylus

Order No: 412 69 34-01

Stitch Card – Antique Quilt Stitches and Hand Embroidery Stitches

Order No: 412 74 69-06

Embroidery unit



Embroidery hoops

1. creative HOOP 80

80x80mm, with adapter

Order No: 820 476-096

2. ROUND HOOP 120x115 mm

Order No: 93-039-343-44-000

3. Clips

Order No: 412 65 18-03

4. Hoop Adapter

Order No: 820 477-096

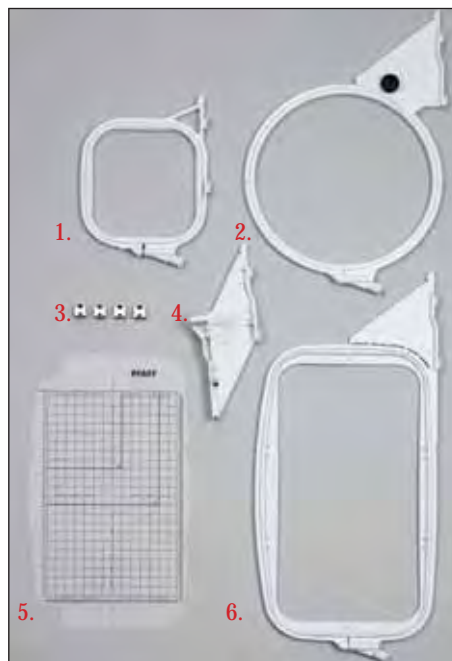
5. Embroidery template

Order No: 412 86 21 01

6. creative HOOP

225x140 mm

Order No: 93-039-340-44-000



1. File assistant

File Assistant

Using the File Assistant you can download embroidery designs directly from the Internet and transfer them to your creative 2170.

Order No: 412 84 16-96

2. Creative gallery designs

3. USB cable

4. Quick embroidery packet

5. 300 Embroidery card

6. Embroidery threads

Order No: 412 85 90-96

Knee lift

Order No.: 412 70 57 02

