

PREPARATIONS



Operating Instructions

Voltage Switch



220 - 240V / 120V

The sewing machine is set to the voltage 220 - 240V. To change the voltage to 120V (US/Canada), you must set the voltage switch on the underside of the machine to 120 V.

If you are unsure of the correct voltage for your country, please check with your authorized Pfaff sewing machine dealer or local electrical authorities before plugging in your machine.



Electrical connection

Connect the lead cord between the socket of the sewing machine and the wall outlet.

For the USA and Canada:

This sewing machine has a polarized plug (one blade wider than the other). To reduce the risk of electric shock, this plug is intended to fit in a polarized outlet only one way. If the plug does not fit fully in the outlet, reverse the plug. If it still does not fit, contact a qualified electrician to install the proper outlet.

DO NOT modify the plug in any way!



Connecting the foot control

Pull the retractable cord out of the foot control to a length that is comfortable for you. The foot control has an automatic cord-rewind reel for storage. Connect the plug of the foot control to the connection socket of the sewing machine.

The sewing speed is controlled by pressing the foot control.

The foot control ATK 0080 must be used for this sewing machine.





Main switch

When the main switch is switched on (switch function I) the sewing lightbulb lights up and the multi-color touch screen lights up.

The sewing machine is now ready to function.

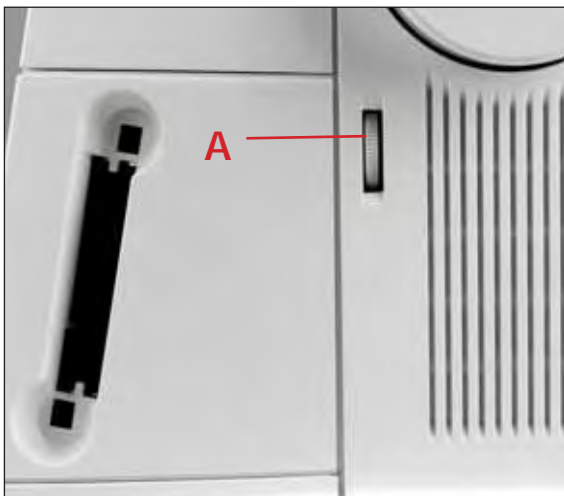
"0" = OFF

"I" = ON



Thread cutter

Pull the thread from the back to the front up over the thread cutter.



Contrast of the screen

The contrast of the screen is adjustable. The setting can be re-adjusted with the screen control dial (A).

Carrying case

Place the enclosed lead cord, the foot control and instruction book into the storage compartment of the carrying case.



Lid

Open the lid upwards.

The stitches of the sewing machine are illustrated on the inside of the lid.



Accessory tray

Open the accessory tray by placing your left index finger on the ridged area on the left of the lid and open the lid up and towards you.

Free arm

In order to sew using the free arm, swing the detachable accessory tray to the left and lift it up out of the hole. When replacing the accessory tray, make sure it is flush with the free arm of the sewing machine.

Note: Some fabrics have a lot of excess dye which can cause discoloration on other fabric but also on your sewing machine. This discoloring may be very difficult or impossible to remove.

Fleece and denim fabric (especially in red and blue) often contain a lot of excess dye.

If you suspect that your fabric/ready-to-wear garment contains a lot of excess dye, always pre-wash it before sewing/embroidering to avoid the discoloring.





Changing the presser foot

Snap off the presser foot



Switch off the main switch.

Press the front part of the presser foot upwards and at the same time the rear part downwards until it disengages from the presser foot holder.



Snap on the presser foot

Place the presser foot under the presser foot holder, so that when the presser foot lift is lowered, the pins of the foot snap onto the presser foot holder.



Check:

Please check that the presser foot is properly attached by raising the presser foot lift.

Note: If your Presser foot lift is disengaged because of the embroidery or free-motion, step on the foot control in a sewing stitch or disengage the free-motion icon.

The IDT (Integrated Dual Feed)

For sewing any fabric precisely Pfaff provides the ideal solution: the Integrated Dual Feed, IDT system. As on industrial machines, the IDT feeds the fabric from the top and bottom at the same time at the same stitch length. The fabric is fed precisely. On light fabrics such as silk or rayon the dual feed prevents puckering of the seam. The even feeding action also ensures perfect matching of checked and striped fabrics. The IDT keeps all layers of quilt projects aligned to prevent stretching of the top layers.



Engaging the IDT

Important: For all work with the Integrated Dual Feed IDT, use presser feet with the center back cut-out.

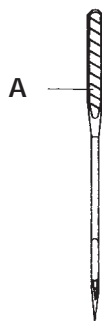
Raise the presser foot. Press the IDT down until it engages.




Disengaging the IDT

Hold the IDT with two fingers at the ribbed ankle. Press the IDT down, then pull it away from you and release the IDT slowly upward.





Changing the needle

 Switch off the main switch.

To remove: Lower the presser foot and set the needle to its highest position. Loosen the needle screw and pull the needle out downwards.

To insert: The flat side A of the needle must face to the rear. Lower the presser foot and insert the needle, pushing it up as far as it will go. Hold the needle and tighten the needle screw firmly.



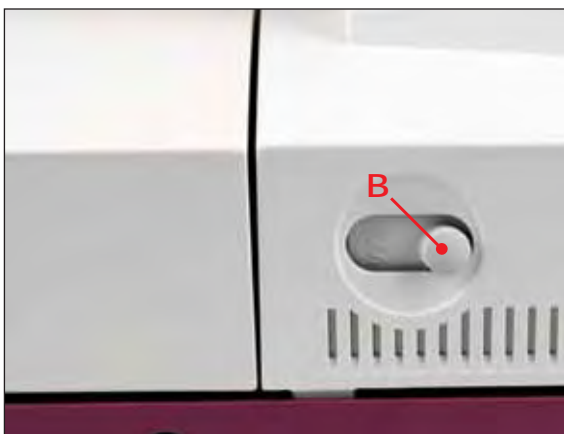
The feed dogs

For certain sewing work such as free-motion quilting or darning or when embroidering, the feed dog must be lowered. On your Pfaff creative 2170 there are two different methods for lowering the feed dogs, one on the outside of the machine and one inside the bobbin door.

For either method:

Raise the presser foot before lowering the feed dog. Push slide A or B to the left.

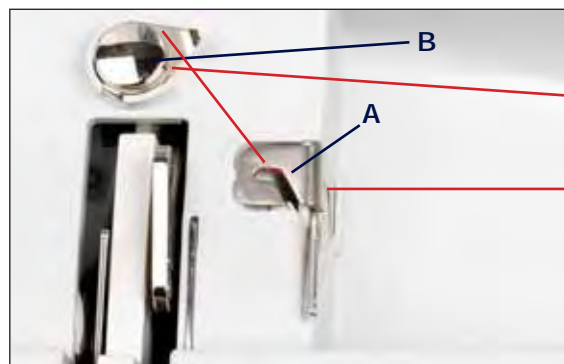
To bring the feed dogs back up move the slide to the right.





Winding the bobbin from the spool pin

Choose a spool cap slightly larger in diameter than the spool. For example use the large spool cap for larger spools of thread, and the smallest cap with cone-type spools. Place the sewing thread on the spool pin. Slide the cap tightly against the spool.



Threading

Place the thread into guide (A) from front to back and pull it counter-clockwise ABOVE the bobbin winder thread guide (B).

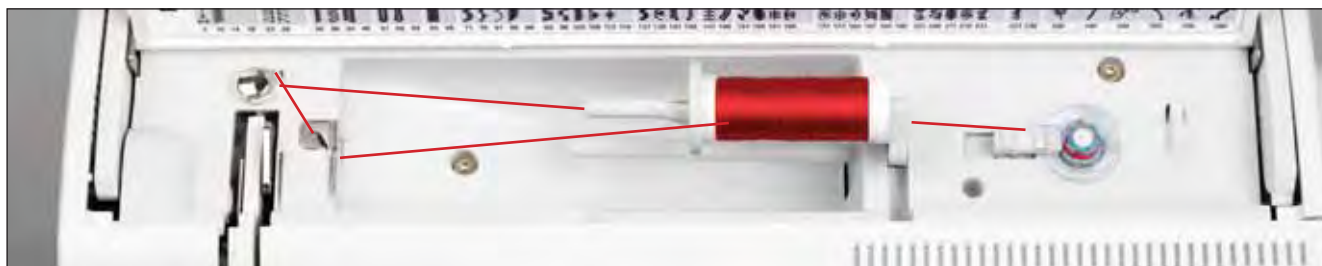
Wind the start of the thread around the bobbin several times in a clockwise direction.

Note: When bobbin winding always place the thread ABOVE the bobbin winder thread guide (B). Place a bobbin on the bobbin winder with the Pfaff logo up. Make sure the bobbin is secure on the bobbin winder by placing the small pin on the bobbin winder into the slot on the bobbin.

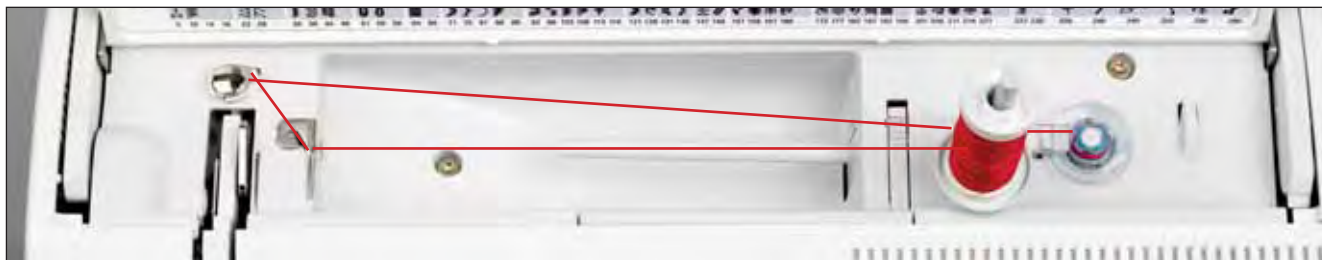


Switch on the main switch.

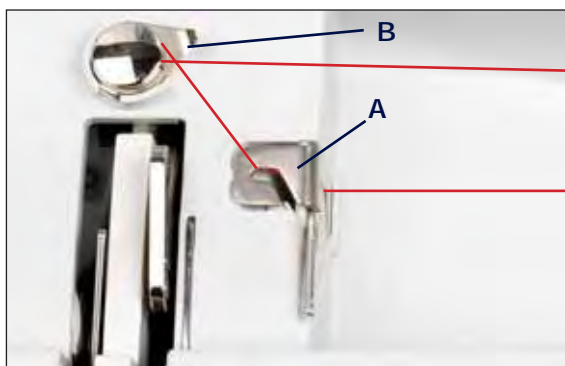
Start bobbin winding by pushing the bobbin winding lever to the right. You may need to adjust the Winding speed on the window in the multi- color touch screen as explained on page 2:11. As soon as the bobbin is full, the winding action will be stopped automatically. Cut the thread and remove the bobbin from the winder.



1.



2.



1. Winding from the second spool pin

Swing the second spool pin up and lock. Place a spool of thread with an appropriate spool cap on the spool pin.

2. Winding from the third spool pin

Insert the third spool pin in the hole provided. Place the appropriate spool cap and then a spool on the spool pin.

Threading

Place the thread into thread guide (A) from front to back and pull it counter clockwise above the bobbin winder thread guide (B). Wind the start of the thread around the bobbin several times in a clockwise direction.

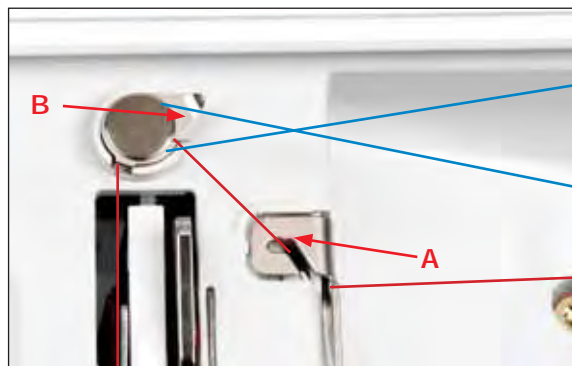
Start bobbin winding by pushing the bobbin lever to the right. As soon as the bobbin is full, the winding action will be stopped automatically. Cut the thread and remove the bobbin from the winder.



Bobbin winding while embroidering

The creative 2170 has a thread guide for bobbin winding while embroidering.

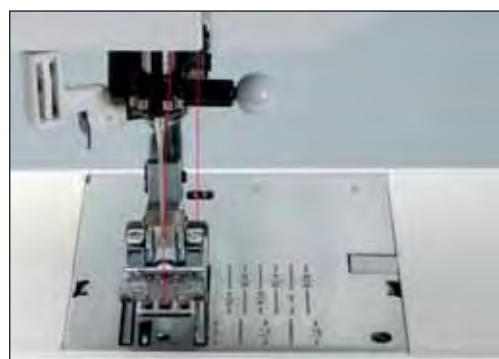
The needle thread (red) is placed into the thread guide (A) and underneath the bobbin winder thread guide (B). Pull the bobbin thread (blue) counter clockwise above the bobbin winder thread guide. Wind the start of the thread around the bobbin several times in a clockwise direction.



Winding a bobbin through the needle

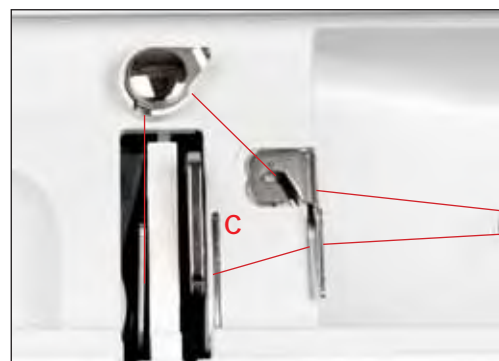
It is possible to wind bobbins even when the machine is fully threaded (see page 2:14 for threading instructions).

Raise the presser foot. Pull the needle thread underneath the presser foot and upward through the right-hand threader slot.



Place the thread from left to right through the take-up lever (C).

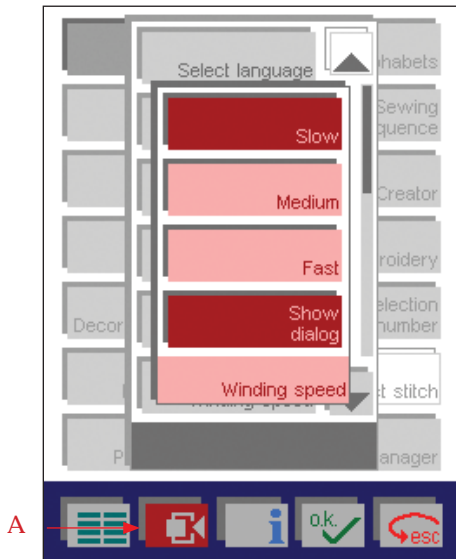
Note: The take-up lever must be at its highest position.



Guide the thread to the right. Wind the start of the thread around the bobbin several times in a clockwise direction. Start bobbin winding by pushing the bobbin lever to the right. As soon as the bobbin is full, the winding action will be stopped automatically. Cut the thread and remove the bobbin from the winder.

Note: The thread knife next to the bobbin winder makes it easy to cut the thread after bobbin winding.





Setting the bobbin winding speed

You can select the speed in which the bobbin winding is wound when the machine is stopped. In the context menu (A), you will find an icon called Winding speed. If you touch that icon, a pop-up will appear where you can choose if you want the winding speed to be Slow, Medium or High.

If you touch the Show Dialog icon, a window for selecting the speed opens each time the bobbin winder is switched on.

The speed that you have selected can halved at any time by touching the half speed button.

Note: If you wind the bobbin while the sewing machine is running, the winding speed is automatically set to Low.

Inserting the bobbin and bobbin case



Switch off the main switch.

Open the bobbin door at the left side swinging it open towards the front.

Lift the latch of the bobbin case and pull the bobbin case out of the machine. Release the latch and take the empty bobbin out of the bobbin case.



Bobbin thread monitor

When the bobbin thread is nearing its end the red light next to the reverse button flashes automatically. A warning message will also be given on your display. This function is only activated when the bobbin door is closed.



Inserting the bobbin

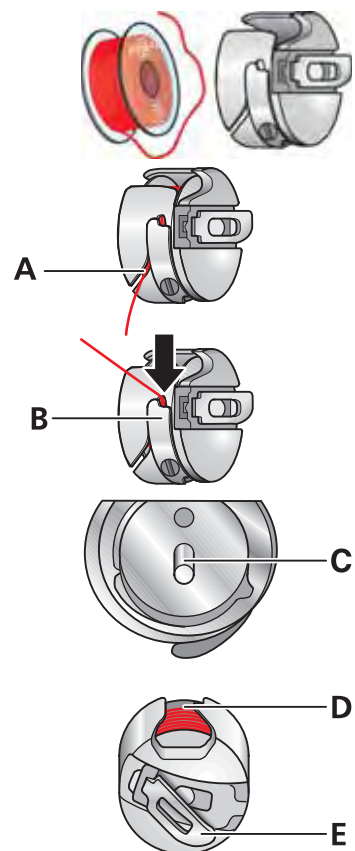
Insert the full bobbin (with the Pfaff logo facing towards the bobbin case) in the bobbin case. When doing so, pull the thread through slot (A), then under tension spring (B) until it rests in the opening (see arrow).

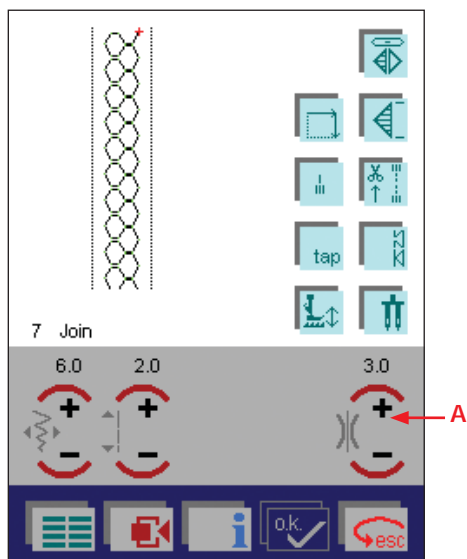
Check: Hold the bobbin case with the bobbin facing towards you. When you pull the thread, the bobbin must turn clockwise.

Inserting the bobbin case

Lift latch (E) and push the bobbin case fully onto pin (C) of the sewing hook. Opening (D) of the bobbin case must face upwards.

Check: Pull the bobbin thread sharply. The bobbin case must not fall out of the hook.





Correct top tension - How to get it

This machine will automatically preset the tension for different types of stitches. Depending on what type of fabric and threads you are using, manual adjustments might be needed.

If you find that the bobbin thread is visible on the top side of the fabric or that the top thread is visible on the underside of the fabric, you need to adjust the thread tension.

Press the thread tension icon (A), + and - to set the required amount of the needle thread tension. Your adjustments will be reset when you select a new stitch or design. To save your alterations for the next time you sew see page 3:12.

Thread tension

For the best stitch appearance and durability make sure the needle thread tension is correctly adjusted, i.e. the threads evenly meet between the two fabric layers.

The following is valid for general sewing work:

Bobbin thread is visible on the top side of the fabric:

The needle thread tension is too tight.

The needle thread tension must be reduced.

Top thread is visible on the underside of the fabric:

The needle thread tension is too loose.

The needle thread tension must be increased.

For decorative stitches and buttonholes the top thread should be visible on the underside of the fabric.



Threading the needle

Raise the presser foot. Place the thread on the spool pin and fit a spool cap of the right size.

Using both hands, pull the thread into the thread guide (A) from front to back. Place the thread from the right underneath the bobbin winder thread guide (B).

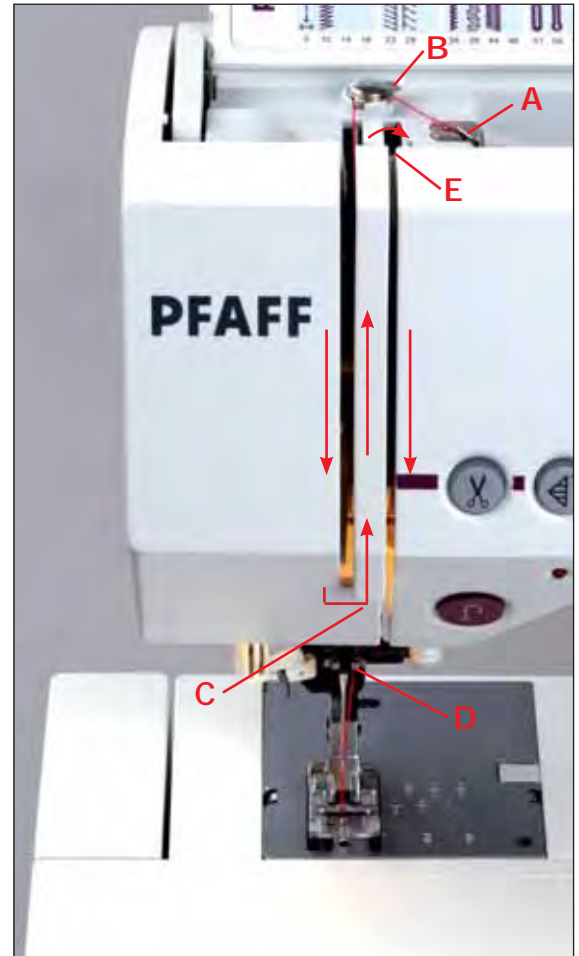
Now pass it through the left-hand threading slot downwards.

Pull the thread around the stop (C) in the right-hand threading slot and upwards to the take-up lever (E). The thread must be pulled fully into the take-up lever from left to right. Pass the thread downwards in the right-hand threading slot.

Pull the thread from the side behind one of the two thread guides (D).

To thread the needle, please refer to the next section.

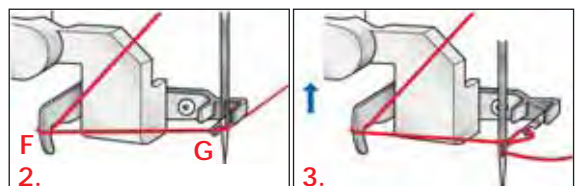
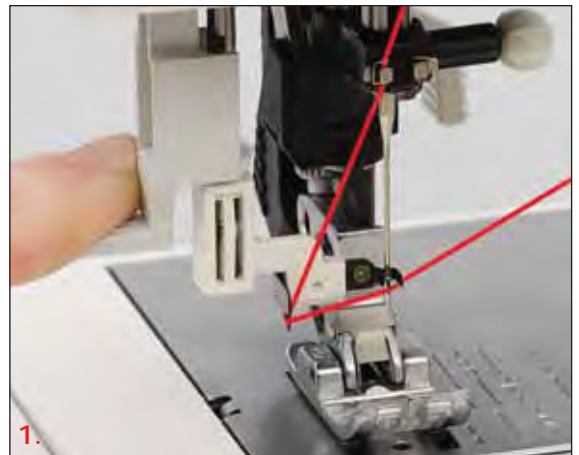
Note: When sewing always place the thread underneath the bobbin winder thread guide (B).



Needle threader

In order to make threading of the needle easier and quicker the Pfaff needle threader is built-in. The needle threader allows you to thread the needle automatically.

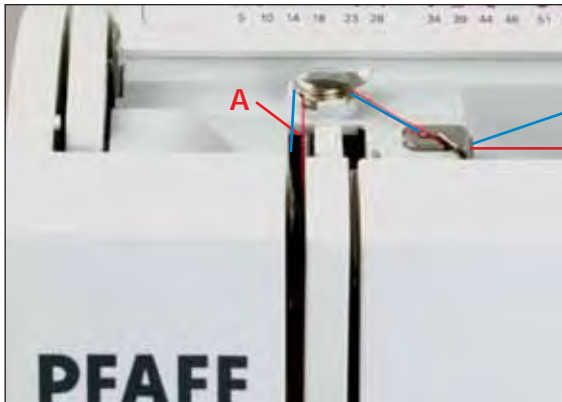
1. Lower the presser foot. Press the threader down with the handle. The threader hook (G) swivels through the needle eye.
2. Place the thread from the back, over the hook (F) and under the thread hook (G) and hold the end of the thread taut. Reduce the pressure so that the needle threader slowly moves upwards.
3. At the same time, the threader hook swivels out of the needle eye and pulls the thread through the eye. Slightly release the end of the thread, so that a thread loop can form behind the needle. Release the threader and pull the rest of the thread end through the needle eye.





Bobbin thread

Raise the presser foot. Insert the bobbin case and place the thread to the left (see picture). Close the hook/bobbin door. Place the fabric under the presser foot and start to sew. The machine will pull the thread up by itself.



Threading the twin needle

Replace the sewing needle with a twin needle.

Swing the second spool holder up and lock. Place a spool of thread with an appropriate spool cap on it. Make sure that both threads are placed underneath the bobbin winder thread guide. During threading in the left threading slot, make sure that you pass one thread to the left and one thread to the right sides of the tension disk (A). Continue threading in the usual manner, making sure the threads do not become twisted together.



Pull the right thread into the right thread guide and thread the right needle. Pull the left thread into the left thread guide and thread the left needle.

It is not possible to use the automatic needle threader with a twin needle.

Presser foot lift

The presser foot is raised or lowered with the presser foot lift.



Electronic knee lift

Your Pfaff creative 2170 is provided with an electronic knee lift for regulating the presser foot height.

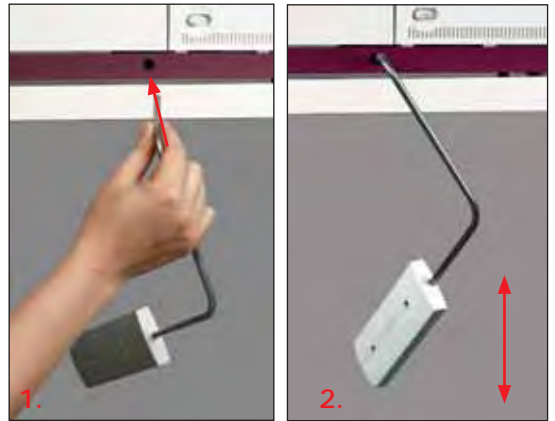
1. Push the knee lift fully into the provided hole on the machine.

Note: the flat side must face upwards.

2. Adjust the rectangular bar on the knee lift until it is positioned at a comfortable height for you.

If you press the knee lift to the right, the presser foot will raise.
Now you can guide the fabric with both hands.

3. To remove the knee lift, just pull it out of the hole.



General notes on how the Pfaff creative 2170 works

In your sewing machine there are two tools to help you while you are sewing; the creative Assistant and the Machine Assistant.

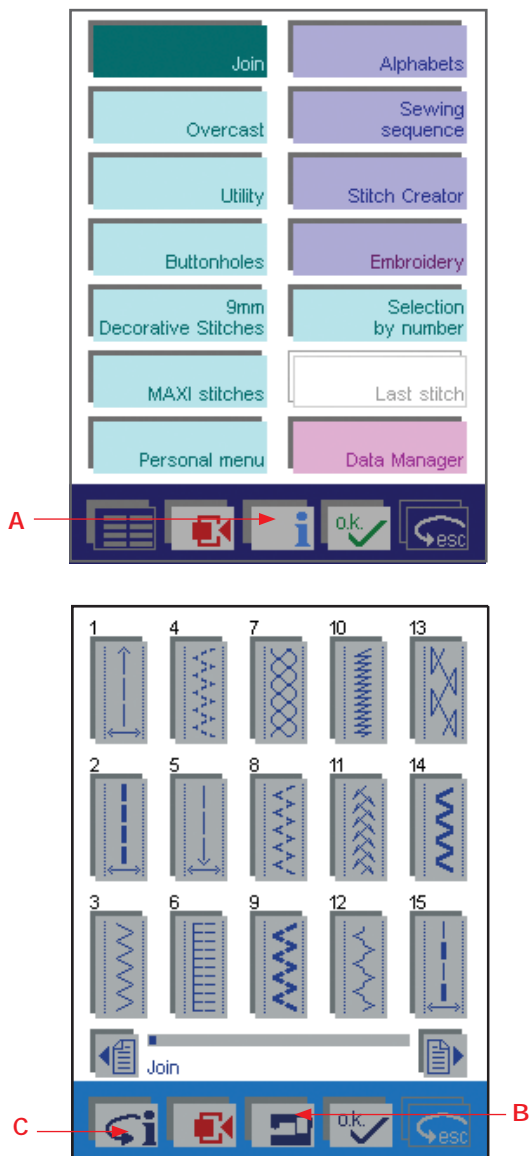
Creative Assistant

In your Pfaff creative 2170 there is a creative Assistant function (A) that gives you information on how to use the machine. If you press the creative Assistant while you are on the Main menu you will get general information about the machine. If you touch the icon within a stitch, the direct help function is launched. It provides you with information about what foot to use etc.

Machine Assistant

When you are in the creative Assistant you can reach the Machine Assistant function by pressing the Machine Assistant icon (B). The Machine Assistant gives you information on how to use the machine. You can choose from two menus; Sewing and Embroidery. You can among other things, find instructions on how to thread the needle, wind a bobbin, change the presser foot, change the light bulb, and fit the embroidery hoop to the machine.

When closing the creative Assistant press the (C) icon. The toolbar will change color and the buttons will change to the normal toolbar.



creative Data Manager

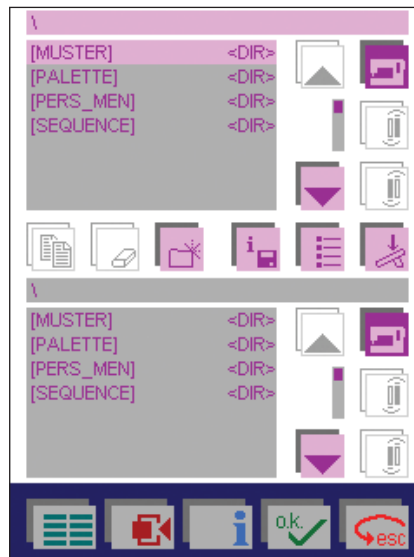
The creative Data Manager organizes your Pfaff creative 2170's stitches. Here you can organize stitches, stitch sequences, personal menus, and programs as the Patchwork program.

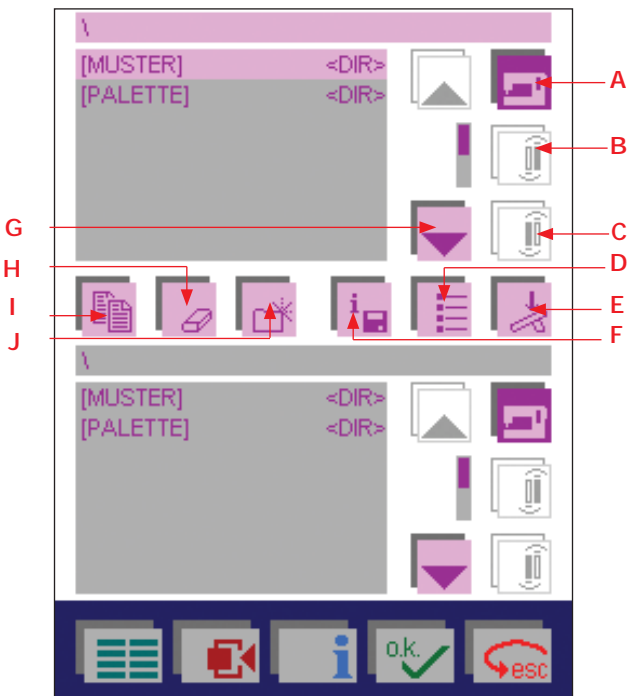
You have access to the following functions:

1. Personalized stitches can be saved and renamed, copied or deleted.
2. Designs can be copied from a card to a creative memory card.
3. Sequences/combinations can be renamed, altered or deleted.
4. Personal menus can be altered, renamed or deleted.
5. New directories and sub-directories can be created in the machine or on a creative memory card.
6. Data in the memory can be accessed.
7. Individual stitches or designs within a sequence/combination can be accessed.
8. An entire directory can be accessed. Your Pfaff creative 2170 is always ready to sew, even when the Creative Data Manager is open.

In your creative Data manager there are two fields available. One field is the source data. The other field is the destination data. Either field can be used as source or destination. To open directories, sub-directories/sequences/combinations, personal menus or data records there is a selection bar which you can move up or down with the arrows.

In order to process the data record, it must be selected.





creative Data manager

- A. Machine memory icon: Use this function to access the stitches or the embroideries in the machine.
- B. Front card drive icon, card inserted: use this function to access the front card drive.
- C. Rear card drive icon, no card in the machine: Use this function to access the rear card drive.
- D. Sort criterion icon: use this function to sort your data alphabetically or according to data type.
- E. Start sewing: If you touch this icon when you have marked a sequence, you can sew it straight away. The corresponding processing menu for the sewing sequence or embroidery combination appears on the screen. Read more about sewing sequence on page 4:4-4:5.

If you touch this icon when a stitch is marked, the processing menu for the stitch appears and the machine is ready to sew.

If you touch this icon when a Personal menu is marked the personal menu is displayed and you can select a stitch and sew it. The stitch appears on the corresponding processing screen.

- F. Memory information icon: Use this function to consult the data records contained in a directory or stitch that you have marked.
- G. Activity arrow icon: using these arrows you can browse through the screen. The dark marker bar indicates the marked area.
- H. Delete icon: Use this icon to delete a data record (directory, stitch or stitch sequence) that you have marked.
- I. Copy icon: this is a function for copying renaming, moving stitches/designs, sequences or combinations.

Copying data:

You can duplicate data, such as stitches and stitch sequences, from the machine or a creative card and save them in a different memory or save or insert them on a creative card. To do this, mark your destination file, mark the source file and touch 'Copy'.

Sequence: 1. Mark destination / 2. Mark source / 3. Copy

Renaming data:

To rename data such as stitches, stitch sequences or personal menus, touch the Copy icon and Rename. A window for entering a new name (max. 8 characters) is opened.

Move:

You can move stitches or stitch sequences from the machine or from a creative card to another memory or onto a creative card. To do this, mark your source file, mark the destination file and touch the Copy icon and Move.

Sequence: 1. Mark destination / 2. Mark source / 3. Move

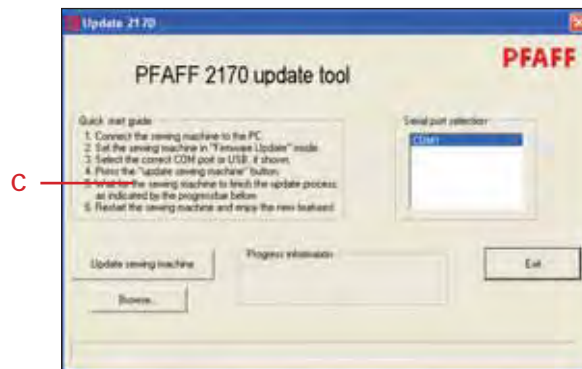
How to update your machine

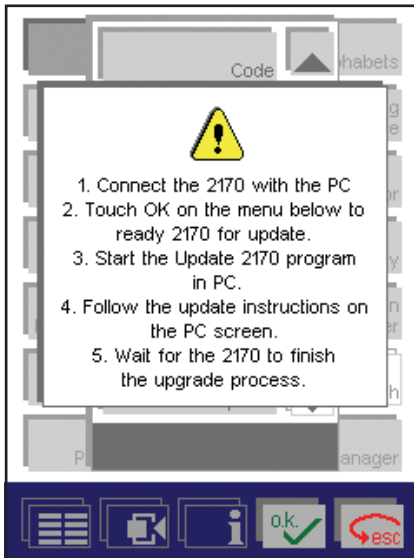
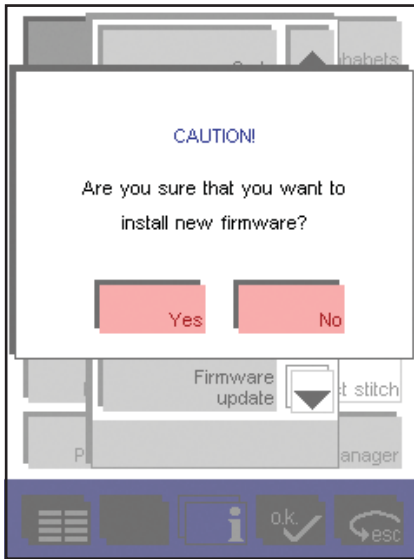
Together with your Pfaff creative 2170 you received a special cable with USB connection on one end and a creative card on the other. Use this cable when updating your machine or when transferring data between your Pfaff creative 2170 and the 3D File Assistant on your computer.

1. Enter the Pfaff home page at www.pfaff.com and click on 2170 update.
2. Click to download.
3. Fill out your registration form or enter your e-mail address and start the search. When the registration is complete, start the download.

Note: Depending on the Windows version installed on your computer, your screen may look different than those shown.

4. To run the download program directly from the site, choose Open this file from its current location.
5. If you want to download the program to your hard drive and update the machine later, choose Save this file to disk. See How to save the update program to your hard drive.
6. Click Yes to continue.
7. When screen (C) appears the update program is activated and you can close your Internet connection.





Set your Pfaff creative 2170 in the update mode

1. Connect the cable to a port on your computer then insert the card in one of the card drives in your sewing machine.
2. Turn the machine on.
3. Touch the Main Menu.
4. Touch Context menu. Touch Firmware update. Choose yes to the prompting question. A new pop-up with updating instructions appears.
5. Read the instructions, then touch OK to prepare your Pfaff creative 2170 for updating. Yet another pop-up appears telling you that the machine is waiting for data.
6. Click on the Update sewing machine icon on the computer to start the update. The updating process will begin and after approximately 20 minutes, you can restart the sewing machine and your Pfaff creative 2170 is ready to use with the new program version. If you have problems updating your Pfaff creative 2170, see section Troubleshooting, page 2:23.



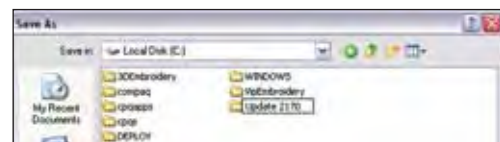
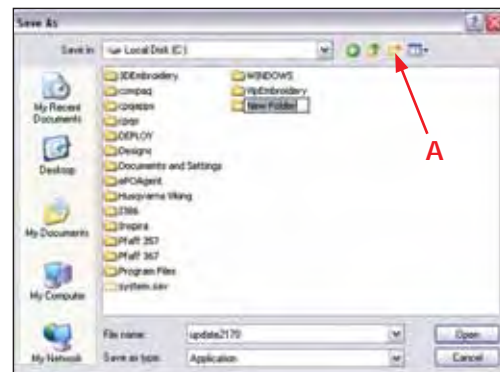
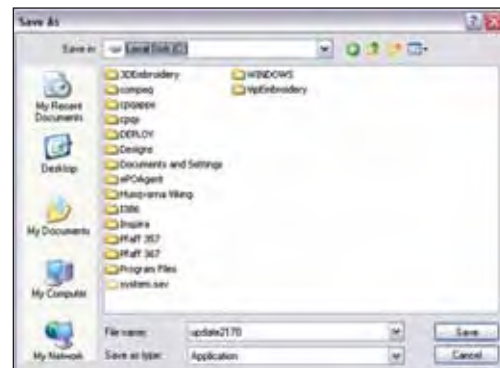
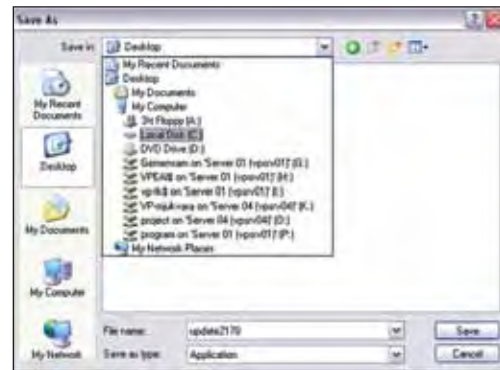
How to save the update program to your hard drive

Note: Depending on the Windows version installed on your computer, your screen may look different than those shown.

1. Click on the update link, the following screen appears.
2. Choose Save this file to disk by clicking in the white circle in front of the text (if it has a dot in front of it, it is already selected). Click OK.
3. The Save As window appears. If you have updated your 2170 previously, browse to the update folder you created and save the new file there. Otherwise create a new folder according to the instructions below.

Create a folder to save in

4. Left mouse click on the arrow down symbol. Your hard drive is most often called Local Disk and is followed with a C: as the name of the drive.
5. Find your hard drive and left mouse click to open it.
6. Click on the new folder icon, (A) to create a new folder on your hard drive.
7. The new folder is selected so you can enter a new name. Name the folder Update 2170.
8. Double-click on the folder to open it.
9. Left mouse click on the Save icon to save the update file in the folder.





10. The saving to the folder begins. The speed of your Internet connection will determine how long the download will take.



11. The file Update 2170 has now been downloaded.
Left mouse click on the Open folder icon, to open the folder where the update file is stored.

(Depending on the settings in your computer the above window might close automatically. If so, please follow the instructions under Update later).



12. Double-click the left mouse button on the Update 2170 icon. The update program starts. Follow the instructions on the screen and set your 2170 in the update mode.

Update later

If you want to update your Pfaff creative 2170 at a later time, left mouse click on the Close icon. If the Download complete screen is closed automatically, disregard the above.

When you want to update your 2170, left mouse double click on the My Computer icon on your desktop (the opening screen when you first turn on your computer). Left mouse double click on the C: drive.

Left mouse double click on the Update 2170 folder to open it.

Double click on the Update 2170 file.

The update program starts.

Follow the instructions on the screen and set your 2170 in the update.

Troubleshooting

- The message Unable to open COM-port/USB appears. Check that the correct COM-port/USB is selected in the serial port selection list.
- The message Unable to initialize the sewing machine monitor appears. Check all connections between the computer and the machine. Switch off your Pfaff creative 2170, restart and set it in the update mode. Restart the update program.
- If a communication error occurs, check the connection to the computer, turn the sewing machine off and back on again. When turning the machine on, the screen will be black. Click the Update sewing machine icon on the PC. Within a few seconds the updating process will start again.